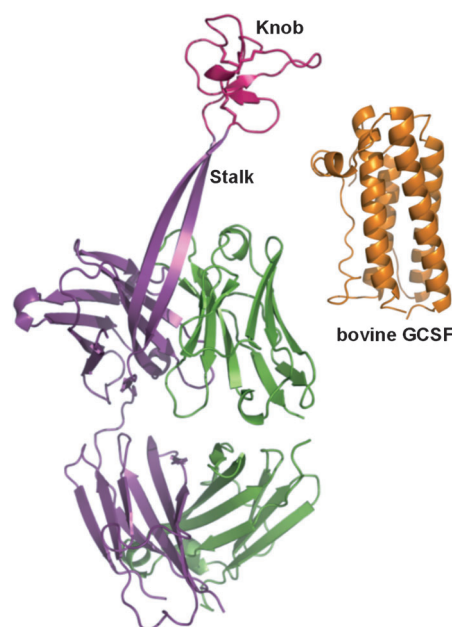


# Functional Antibody CDR3 Fusion Proteins with Enhanced Pharmacological Properties\*\*

Yong Zhang, Danling Wang, Lorenzo de Lichertervelde, Sophie B. Sun, Vaughn V. Smider, Peter G. Schultz,\* and Feng Wang\*

Most mammalian antibodies have complementarity determining region (CDR) loops of 8–16 residues, while some human antibodies have longer, protruding CDR loops that play a role in virus neutralization.<sup>[1]</sup> The bovine antibody repertoire features a subgroup of antibodies with exceptionally long heavy chain complementarity determining region 3 (CDR3H) loops. The lengths of CDR3H in these bovine antibodies range from 40 to 67 amino acid residues.<sup>[2]</sup> We recently solved the X-ray crystal structure of bovine antibody BLV1H12 which has a CDR3H of 61 residues (Figure 1).<sup>[3]</sup> The crystal structure revealed a novel CDR3H structure that forms a solvent-exposed two-stranded antiparallel sheet approximately 20 Å (seven amino acids) in length (the stalk region). This  $\beta$ -sheet terminates in a folded protein domain that is stabilized by three pairs of disulfide bonds (the knob region). This knob region was shown to play a critical role in recognition of a viral antigen in the case of one such bovine antibody.<sup>[3]</sup> Herein, we asked whether the knob region of BLV1H12 can be substituted with other native protein and peptide ligands to create chimeric antibodies with new or enhanced properties. For example, such fusion proteins may have improved serum half-lives relative to the native polypeptide,<sup>[4]</sup> improved binding affinity or specificity owing to interactions of the cognate receptor with the other bovine CDRs (or simply through bivalent binding), or improved expression and/or stability in the context of the antibody framework. To begin to explore these possibilities, we first attempted to substitute bovine granulocyte colony-stimulating factor (bGCSF) for the knob region in CDR3H of antibody BLV1H12.<sup>[5]</sup> The resulting bovine antibody-bGCSF (Ab-bGCSF) fusion protein was stably expressed in mam-



**Figure 1.** X-ray crystal structures of bovine antibody BLV1H12 Fab fragment (PDB ID: 4K3D) and bGCSF (PDB ID: 1BGC).

lian cells, exhibited potency similar to bGCSF in proliferating GCSF-dependent cells, and significantly increased and sustained neutrophil populations for over three weeks in rodents.

GCSF is a 20 kDa cytokine known to augment antimicrobial defenses by stimulating the production of white blood cells, and is used to accelerate recovery from neutropenia after chemotherapy.<sup>[6]</sup> Because GCSF has a relatively short plasma half-life (2–4 h),<sup>[7]</sup> poly(ethylene glycol) (PEG)- and Fc-fused GCSF variants have been synthesized with improved half-lives.<sup>[8]</sup> Similarly, we hypothesized that substitution of GCSF into CDR3H of BLV1H12 should also extend its half-life because of the large size of the chimeric protein and its binding to the neonatal Fc-receptor (FcRn).<sup>[9]</sup> Fusion of bGCSF into the CDR3H may also prevent proteolysis by circulating exopeptidases. To synthesize a chimeric GCSF-BLV1H12, the BLV1H12 Fab fragment was first genetically fused with human IgG1 Fc to create a chimeric BLV1H12 full-length IgG. The gene encoding bGCSF was then inserted into the CDR3H region by fusing the N- and C-termini of bGCSF with the ascending and descending  $\beta$ -strands of the stalk, respectively, to replace the knob domain (Cys108–Tyr146; Supporting Information, Figure S1 A). To optimize the folding and stability of the antibody-bGCSF fusion protein, a flexible GGGGS linker was also inserted at each

[\*] Dr. Y. Zhang,<sup>[‡]</sup> Dr. D. Wang,<sup>[‡]</sup> Dr. L. de Lichertervelde, S. B. Sun, Dr. P. G. Schultz,<sup>[‡]</sup> Dr. F. Wang<sup>[‡]</sup>  
Department of Chemistry, The Scripps Research Institute  
10550 N. Torrey Pines Road, La Jolla, CA 92037 (USA)  
E-mail: schultz@scripps.edu  
fwang@calibr.org

Dr. V. V. Smider  
Department of Molecular Biology,  
The Scripps Research Institute  
10550 N. Torrey Pines Road, La Jolla, CA 92037 (USA)

[‡] Present address: California Institute for Biomedical Research (Calibr)  
11119 N. Torrey Pines Road, La Jolla, CA 92307 (USA)

[\*\*] This work was supported by a National Institutes of Health (NIH) Grant R01 GM062159 (to P.G.S.). This manuscript is number 23082 of The Scripps Research Institute.

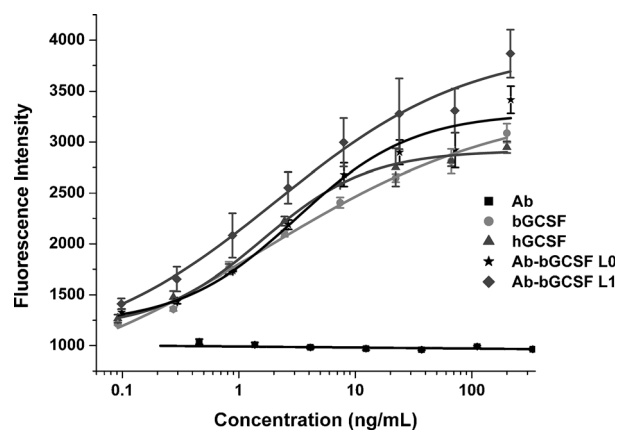
Supporting information for this article is available on the WWW under <http://dx.doi.org/10.1002/anie.201303656>.

end of the bGCSF fragment to increase flexibility. The resulting antibody-bGCSF fusion proteins with and without the N- and C-terminal linkers were designated as Ab-bGCSF L1 and Ab-bGCSF L0, respectively. As a control, bGCSF with a C-terminal 6 × His-tag was cloned into the pFuse vector for mammalian expression and purification.

Full-length BLV1H12 IgG, the Ab-bGCSF fusion proteins and His-tagged bGCSF were transiently expressed in Free-Style HEK293 cells and secreted into culture medium. Purified IgGs and His-tagged bGCSF were analyzed by SDS-PAGE gel (Figure S1B). Under non-reducing conditions, bovine BLV1H12 full-length IgG (Ab) migrates as a single band above 160 kDa owing to *N*-glycosylation in the Fc region, and bGCSF migrates at 20 kDa. The BLV1H12-bGCSF fusion proteins with or without linker (Ab-bGCSF L1 and Ab-bGCSF L0) migrate as single bands above 190 kDa under non-reducing conditions. In the presence of 50 mM dithiothreitol (DTT), the light chains of Ab, Ab-bGCSF L0, and Ab-bGCSF L1 migrate at 23 kDa. The heavy chains of Ab and the Ab-bGCSF fusion proteins migrate at 55 kDa and 70 kDa, respectively (Figure S1B). Mass spectral analysis following treatment with peptide-*N*-glycosidase and DTT indicates mass increases of 15650 Da for the heavy chain of Ab-bGCSF L0 and 16280 Da for the heavy chain of Ab-bGCSF L1 relative to that of Ab (Figures S2–S5). This corresponds to two fused bGCSF proteins per IgG molecule. The final yields of Ab, Ab-bGCSF L0, Ab-bGCSF L1, and His-tagged bGCSF are similar (approximately 17 mg L<sup>-1</sup>), and both the Ab and the Ab-bGCSF fusion proteins have solubility over 10 mg mL<sup>-1</sup> in PBS (pH 7.4). These results are consistent with correct folding of the fusion proteins. In addition, the similar yields and solubilities of the Ab-bGCSF L0 and Ab-bGCSF L1 fusion proteins suggest that the GGGGS linkers do not significantly affect the expression or stability of the fusion proteins.

Next, we examined the proliferative activities of the Ab-bGCSF fusion proteins using mouse NFS-60 cells which are responsive to GCSF stimulation.<sup>[10]</sup> The Ab-bGCSF fusion proteins cause proliferation of NFS-60 cells in a dose-dependent manner (Figure 2), whereas Ab by itself has no proliferative activity, indicating that the observed activities of the Ab-bGCSF fusion proteins result from the grafted bGCSF. The potencies of the Ab-bGCSF fusion proteins (EC<sub>50</sub>: 3.1 ± 1.7 ng mL<sup>-1</sup> for Ab-bGCSF L0, and 3.3 ± 1.8 ng mL<sup>-1</sup> for Ab-bGCSF L1) are comparable to that of bGCSF and hGCSF (EC<sub>50</sub>: 1.6 ± 1.1 ng mL<sup>-1</sup> for bGCSF, and 1.6 ± 0.2 ng mL<sup>-1</sup> for hGCSF). Thus, grafting of bGCSF onto the protruding stalk of antibody BLV1H12 (Figure 1) does not appear to affect the activity of this cytokine. In addition, the Ab-bGCSF L0 and Ab-bGCSF L1 fusion proteins have nearly identical proliferative activities, again suggesting that the engineered flexible linkers are not required for folding and activity of the fused bGCSF.

We next examined the ability of the Ab-bGCSF fusion proteins to stimulate granulocyte progenitors in cultures of human hematopoietic stem and progenitor cells.<sup>[11]</sup> Both Ab-bGCSF fusion proteins increase the number of cells in the granulocyte lineage in a dose-dependent manner, similar to bGCSF and hGCSF (Figure S6). Ab itself has no such

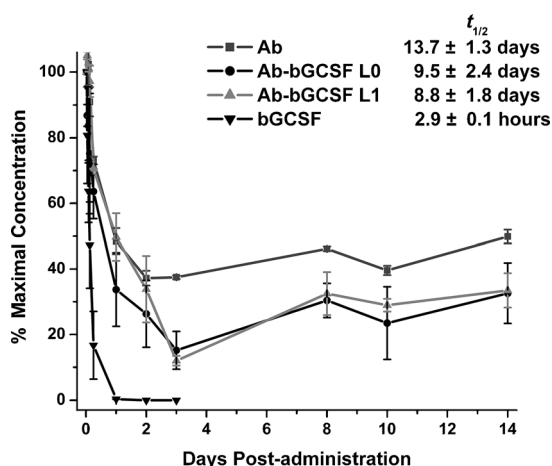


**Figure 2.** Ab-bGCSF fusion proteins stimulate proliferation of mouse NFS-60 cells in a dose-dependent manner. Cells were treated with various concentrations of bGCSF, hGCSF, BLV1H12 full-length IgG (Ab), Ab-bGCSF L0, and Ab-bGCSF L1. Cell viability was quantified using an AlamarBlue (Invitrogen) assay.

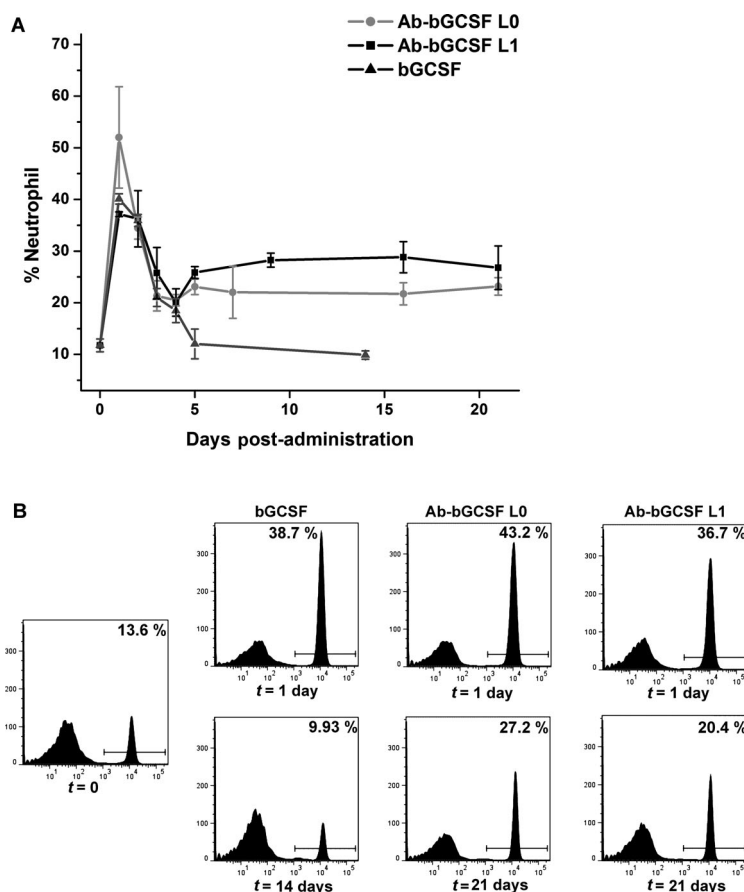
stimulating activity on granulocyte progenitors. The EC<sub>50</sub> values of Ab-bGCSF L0 and Ab-bGCSF L1 for human granulocyte progenitors are 11.4 ± 1.9 ng mL<sup>-1</sup> and 14.6 ± 3.8 ng mL<sup>-1</sup>, respectively. These activities are similar to that of hGCSF (EC<sub>50</sub>: 20.6 ± 3.1 ng mL<sup>-1</sup>), but slightly lower than that of bGCSF (EC<sub>50</sub>: 1.9 ± 0.4 ng mL<sup>-1</sup>), which possibly results from unfavorable interactions of the GCSF receptor with other CDR loops. The GGGGS linkers again had no significant effect on proliferative activity, consistent with the earlier results.

To determine if grafting GCSF into CDR3H of the bovine antibody increases serum half-life, we examined the pharmacokinetics (PK) of Ab, bGCSF and the Ab-bGCSF fusion proteins in mice. Intravenously injected bGCSF was quickly cleared within 24 hours, whereas Ab and the Ab-bGCSF fusion proteins remained above 20% of the maximal concentration even after 14 days (Figure 3). The estimated half-lives are 14 days for Ab, 10 days for Ab-bGCSF L0, 9 days for Ab-bGCSF L1, and 3 hours for bGCSF, by assuming a one-compartment model with first-order elimination. Thus, fusion of bGCSF into the ultralong CDR3H region significantly extends the plasma half-life of Ab-bGCSF fusion proteins.

To test the activity of the Ab-bGCSF fusion proteins *in vivo*, white blood cells from treated mice were stained using Diff-Quick and counted under a microscope to analyze neutrophil levels at day ten after administration of Ab, bGCSF, and Ab-bGCSF fusion proteins. As shown in Figure S7, neutrophil populations in white blood cells were 25% for mice treated with the Ab-bGCSF fusion proteins, which is 60% higher than that of the untreated group. For comparison, neutrophil levels in mice treated with bGCSF were 15%, which is similar to the untreated group. We next examined the time-dependent neutrophil-stimulating activity of the Ab-bGCSF fusion proteins in mice. Upon treatment with bGCSF and the Ab-bGCSF fusion proteins, flow cytometry revealed that the neutrophil populations in each group increased significantly at 24 hours (Figure 4A)—neutrophil numbers increased to 39% for bGCSF, 43% for Ab-bGCSF L0, and



**Figure 3.** Pharmacokinetics in mice. bGCSF ( $8 \text{ mg kg}^{-1}$ ), BLV1H12 full-length IgG (Ab) ( $2.8 \text{ mg kg}^{-1}$ ), and Ab-bGCSF L0 and Ab-bGCSF L1 ( $2.8 \text{ mg kg}^{-1}$ ) were administered by intravenous (i.v.) injection into BALB/c mice (three per group). Blood was collected at day 0 to day 14 and analyzed by ELISA using anti-human IgG Fc and anti-bGCSF antibodies. Data were normalized using the maximal concentration at the first time point (30 min).



**Figure 4.** Pharmacodynamics in mice. A) Single doses of bGCSF ( $10 \mu\text{g kg}^{-1}$ ) and Ab-bGCSF L0 and Ab-bGCSF L1 ( $50 \mu\text{g kg}^{-1}$ ) were administered by subcutaneous (s.c.) injection into BALB/c mice (three per group). Blood was collected and analyzed for neutrophils by FACS using fluorophore-labeled anti-CD45, anti-CD11b, and anti-Ly-6G antibodies. B) Representative flow cytometric analyses of mouse neutrophil populations after treatments with bGCSF, Ab-bGCSF L0, and Ab-bGCSF L1.

37% for Ab-bGCSF L1 (Figure 4B). Thus, the Ab-bGCSF fusion proteins have similar potency to bGCSF in proliferating neutrophils in vivo, and again the GGGGS linkers do not appear to significantly affect the activity. This suggests that the linkers are not involved in modulating bGCSF interactions with its receptor through either a direct or indirect mechanism. Importantly, groups treated with single doses of the Ab-bGCSF fusion proteins exhibited sustained high levels of neutrophils (over 22% for L0 and 26% for L1) for more than 21 days. In comparison, the neutrophil populations in mice treated with bGCSF decreased to normal levels in 5 days, consistent with the short half-life of bGCSF. These results are consistent with the serum half-life measurements and demonstrate the ability to generate long-acting protein therapeutics by fusion of polypeptides into this novel ultralong CDR3H motif of bovine antibodies.

In conclusion, we have shown that the Ab-bGCSF fusion proteins, which are stably expressed in mammalian cells, significantly increase and sustain neutrophil populations for more than three weeks in rodents. Future experiments include structural characterization of the fusion proteins, fusion of other therapeutic cytokines, growth factors, and peptide toxins into the ultralong CDR3H motif, humanization of the bovine antibody scaffold, and mutagenesis of the other CDR loops of the fusion proteins to enhance activity and selectivity.

Received: April 29, 2013

Published online: June 21, 2013

**Keywords:** antibodies · pharmacology · polypeptide · protein engineering · ultralong CDR

- 1) a) E. O. Saphire, P. W. Parren, R. Pantophlet, M. B. Zwick, G. M. Morris, P. M. Rudd, R. A. Dwek, R. L. Stanfield, D. R. Burton, I. A. Wilson, *Science* **2001**, 293, 1155–1159; b) R. Pejchal, L. M. Walker, R. L. Stanfield, S. K. Phogat, W. C. Koff, P. Poignard, D. R. Burton, I. A. Wilson, *Proc. Natl. Acad. Sci. USA* **2010**, 107, 11483–11488.
- 2) a) S. J. Berens, D. E. Wylie, O. J. Lopez, *Int. Immunol.* **1997**, 9, 189–199; b) O. Lopez, C. Perez, D. Wylie, *Immunol. Rev.* **1998**, 162, 55–66; c) S. S. Saini, B. Allore, R. M. Jacobs, A. Kaushik, *Eur. J. Immunol.* **1999**, 29, 2420–2426; d) S. S. Saini, W. Farrugia, P. A. Ramsland, A. K. Kaushik, *Int. Immunol.* **2003**, 15, 845–853; e) Y. Zhao, S. M. Jackson, R. Aitken, *Dev. Comp. Immunol.* **2006**, 30, 175–186.
- 3) F. Wang, D. C. Ekiert, I. Ahmad, W. Li, Y. Zhang, O. Bazirgan, A. Torkamani, T. Raudsepp, W. Mwangi, M. F. Criscitiello, I. A. Wilson, P. G. Schultz, V. V. Smider, *Cell* **2013**, 153, 1379–1393.
- 4) a) E. D. Lobo, R. J. Hansen, J. P. Balthasar, *J. Pharm. Sci.* **2004**, 93, 2645–2668; b) D. Ternant, G. Paintaud, *Expert Opin. Biol. Ther.* **2005**, 5 Suppl. 1, S37–47.
- 5) B. Lovejoy, D. Cascio, D. Eisenberg, *J. Mol. Biol.* **1993**, 234, 640–653.
- 6) K. L. Cooper, J. Madan, S. Whyte, M. D. Stevenson, R. L. Akehurst, *BMC Cancer* **2011**, 11, 404.
- 7) G. Morstyn, L. Campbell, L. M. Souza, N. K. Alton, J. Keech, M. Green, W. Sheridan, D. Metcalf, R. Fox, *Lancet* **1988**, 331, 667–672.

- [8] a) G. N. Cox, D. J. Smith, S. J. Carlson, A. M. Bendele, E. A. Chlipala, D. H. Doherty, *Exp. Hematol.* **2004**, 32, 441–449; b) G. de Haan, A. Ausema, M. Wilkens, G. Molineux, B. Dontje, *Br. J. Haematol.* **2000**, 110, 638–646.
- [9] D. C. Roopenian, S. Akilesh, *Nat. Rev. Immunol.* **2007**, 7, 715–725.
- [10] a) Y. Bai, D. K. Ann, W. C. Shen, *Proc. Natl. Acad. Sci. USA* **2005**, 102, 7292–7296; b) N. Shirafuji, S. Asano, S. Matsuda, K. Watari, F. Takaku, S. Nagata, *Exp. Hematol.* **1989**, 17, 116–119.
- [11] L. de Lichtervelde, C. E. Antal, A. E. Boitano, Y. Wang, P. Krastel, F. Petersen, A. C. Newton, M. P. Cooke, P. G. Schultz, *Chem. Biol.* **2012**, 19, 994–1000.
-